

artseverywhere

January 22–26, 2020 • Guelph **FESTIVAL**

Exhibitions • Literature • Music • Conversations • Circles

Access Guide

The ArtsEverywhere Festival is committed to supporting your access needs.

- ➔ Web: festival.artseverywhere.ca
- ➔ Facebook: AEFestival
- ➔ Twitter: @AEFestGuelph

The ArtsEverywhere Festival takes place on the ancestral and treaty lands of the Mississaugas of the Credit First Nation of the Anishinabek Peoples.

Throughout history, this land and these waters have also been home to the Chonnonton Peoples ("People of the Deer"), as well as the Haudenosaunee from the south, and the Anishinaabe and Métis from the north.

We offer respect as we strengthen our relationships with them. We express our gratitude for sharing these lands for our mutual benefit.

What's inside

Welcome → Page 4

Introduction → Page 6

Venues → Page 8

River Run Centre • 8

Silence • 12

10C • 14

Renann Isaacs Contemporary Art • 18

eBar (above The Bookshelf) • 20

Miijidaa (next to The Bookshelf) • 23

Art Gallery of Guelph • 24

Red Papaya • 26

Live Captioning and ASL → Page 28

Relaxed Spaces and Quiet Rooms → Page 30

How you can help include everyone → Page 32

Glossary of words that will be used → Page 34

Bus stops and schedules → Page 39

Thanks → Page 47

The ArtsEverywhere Festival is presented by Musagetes, the Eramosa Institute and the University of Guelph.



Welcome



Marva Wisdom

On behalf of the ArtsEverywhere Festival team, welcome to our 4th annual Festival! This is our first Access Guide, a companion booklet to our program.

You will find information that we hope will enhance your experience of the Festival. It will guide you to literary readings, lectures, music, conversations, circle gatherings, workshops, and exhibitions.

This guide includes a look at the Festival venues and a glossary of terms that are often used at the Festival. It is an open-source, legacy tool for the Guelph community. We will incorporate improvements and changes into future editions.

We appreciate the work of Bodies in Translation in supporting our access journey. We are also grateful to Kristina McMullin at Tangled Art + Disability, and to our team, Coman Poon, Mike Greer, and Crista Renner. We acknowledge our venue partners, who host Festival events and help support our culture of care.

We are working to reduce and remove barriers to active engagement and enjoyment of the arts. We recognize that this will not be without challenges, and that we may not get it right some of the time. But we want to better understand and enhance access—whether physical, sensory, emotional, or cultural.

Enjoy these five days of inspiration through the arts!

Sincerely,



Marva Wisdom

Director, program co-curator and access co-lead
ArtsEverywhere Festival 2020



**Pick up your free
2020 ArtsEverywhere
Festival program. It
includes a complete
schedule and
description of events.
The two documents
are designed to be
used together.**

Introduction



Coman Poon

This guide is not an end point. It is the first step toward full accessibility. It is a signal of positive social change. We are responding to our failures, making repairs, and learning to do better in the future. This guide is a free tool that challenges prejudice against people with disabilities, or "able-ism." We hope it will help people who do not face accessibility barriers to take these barriers seriously.

We are committed to caring for and including our guests as best we can. We call this a "culture of care." What does a culture of care mean in how we run a five-day festival of arts and ideas? It begins with an understanding that access means more than good intentions and using barrier-free venues. Barriers are not just physical (being able to use a washroom or find an elevator, for example). They also exist in the way people relate to each other and in our culture.

In late 2019, my team and I toured the Festival's venues to audit their accessibility—an "embodied audit." We received help from Guelph-based access consultants, Mike Greer, Crista Renner, and Dawn Matheson. We thank them for their audit leadership and consulting.

Last but not least, I also want to thank the fantastic team of Access Ambassadors. They helped to make this festival a culture of care. What we value and what we measure is centred on people and their lives and experiences.

We understand that people with disabilities do not have special needs. They have a right to be included. We will continue to work together on this to the best of our ability.

Yours in care and solidarity,



Coman Poon

Accessibility and Culture of Care Lead
ArtsEverywhere Festival

Who can I contact for assistance?

Throughout the festival, Access Ambassadors will be available to answer any questions and provide help. All Access Ambassadors will be wearing red scarves. If you have any questions, contact:

Coman Poon

Accessibility and
Culture of Care
Lead at **access@
artseverywhere.ca**
or **647-575-4202**.

Venues

This is what the River Run Centre looks like.



River Run Centre

35 Woolwich Street
519-837-5662
riverrun.ca



Accessible parking

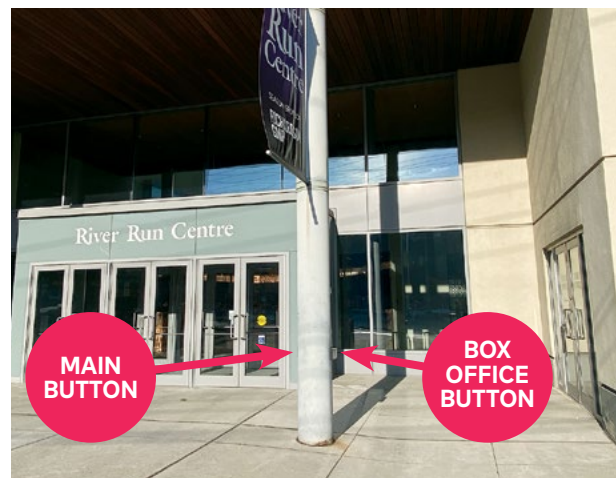


There are limited on-site spots as well as a drop-off in front of the main entrance.

There is also accessible parking in the East Parkade parking garage. You enter by car from Macdonell Street. You can exit on foot or by wheelchair onto Woolwich Street, across the street from the River Run Centre.



Accessible parking across the street



Main and lobby entrances. Buttons for both doors are on the column.

Entrance



You can enter the River Run Centre lobby through a wheelchair-accessible door on the right side of the main entrance. The box office doors are to the right of the main entrance.

Buttons for the power-automated doors of both entrances are located on a free-standing column. The main entrance button is on the left side of the column and the box office is on the right side.

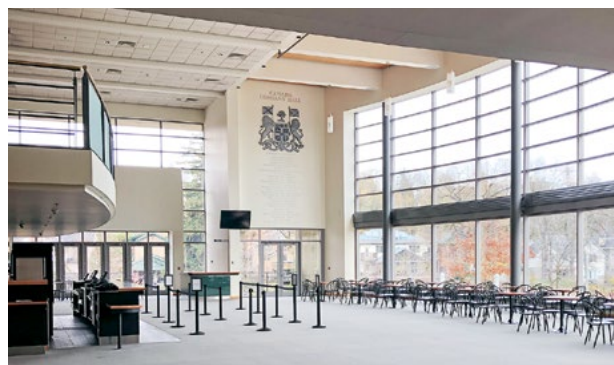


Co-operators Hall entrance

Access Ambassadors can help you with wheelchairs (transfer, relocation, or parking). If you are being accompanied by a support person, please let the Box Office know when you book your ticket or contact Coman Poon (access@artseverywhere.ca or 647-575-4202) in advance.

Co-operators Hall

Once you are in the lobby, Co-operators Hall is on the far left. There is cabaret-style seating with three reserved tables in the front row for unobstructed sight lines.



Canada Company Hall

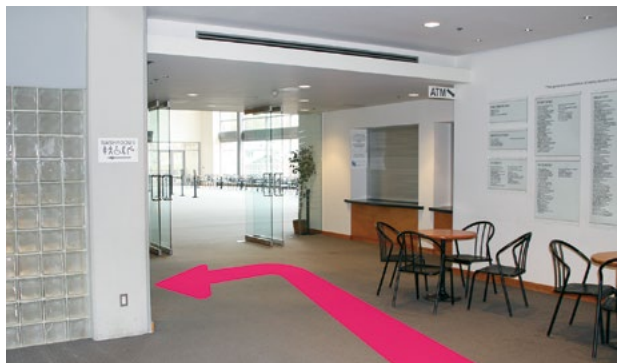
Canada Company Hall

Canada Company Hall is to the right, past the lobby. It is a large open space with big windows and entrances to the Main Stage on the left.

Main Stage

To get to reserved Main Stage seating, enter ramped entrances from Canada Company Hall on the main level.

To get to reserved seating on the balcony level, take the elevator located to the right of the lobby to the third floor. You enter from the balcony (called "the Bridge") overlooking Canada Company Hall.



To the elevator

Washrooms

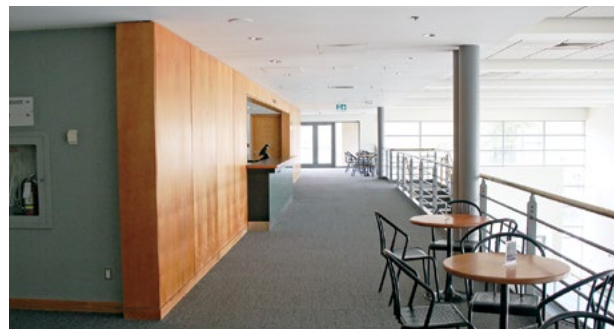


You can reach the barrier-free all-gender washrooms on the third floor via elevator (or stairs from Canada Company Hall). There is also an accessible single washroom on the first floor.

Quiet Room & Relaxed Space



You can reach the Quiet Room through Canada Company Hall or Co-operators Hall. Access Ambassadors will assist you. For the Relaxed Space descriptions and directions, please see page 30.



The Bridge overlooks Canada Company Hall

Booster seats are available on a first-come, first-served basis unless you reserve them in advance. Please contact access@artseverywhere.ca to reserve one.

Assistive listening devices are available free of charge and on a first-come, first-served basis prior to the start of each event.

Service animals are welcome. Please let the River Run Centre know when you book your ticket so that we can ensure space for your service animal.

This is what Silence looks like.



Silence

46 Essex Street
silencesounds.ca



Accessible parking



Accessible parking is on-site.



The main space of Silence has a polished concrete floor.

Washrooms



There is an all-gender, single-user washroom immediately to the right of the main entrance into Silence. The door is manually operated.

Quiet Room



A Quiet Room at the back of Silence has a back exit to a ramp that wraps around the building and is also an emergency exit.



Quiet Room

This is what 10C looks like.



10C

42 Carden Street
519-780-5030
10carden.ca



Accessible parking



10C is in the middle of the block. Four accessible parking spots are available, two at each end of the block.

Accessible parking is also available adjacent to Guelph Provincial Offenses Court building next to the skating rink.

Twelve accessible spots are available in the parkade on Wilson Street near where it intersects Carden Street.



Entrance

Entrance



The entrance is level with the sidewalk. There is a power-automatic door opener.



Lobby



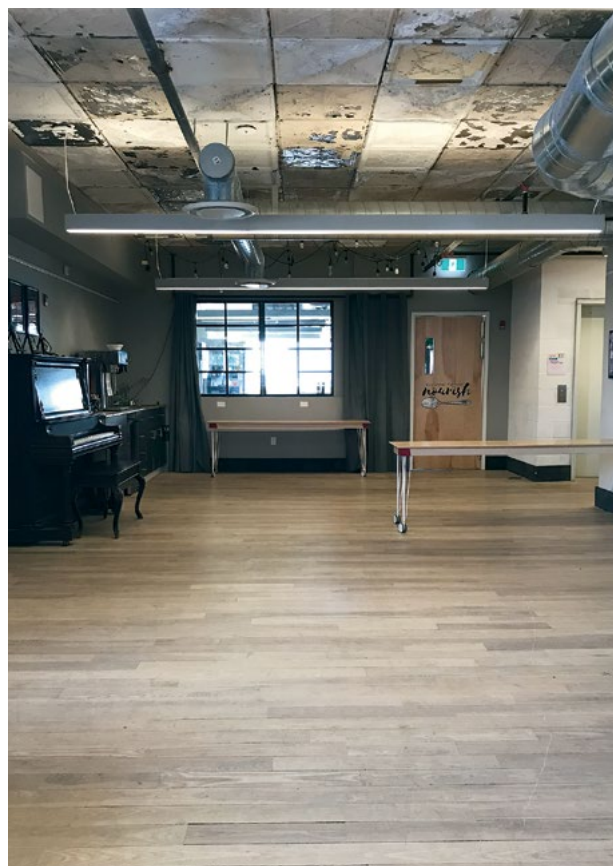
Lobby

Lobby

The lobby area is always staffed by 10C at reception. Access Ambassadors will be on hand to greet, direct and/or accompany you to fourth floor space by the elevator.

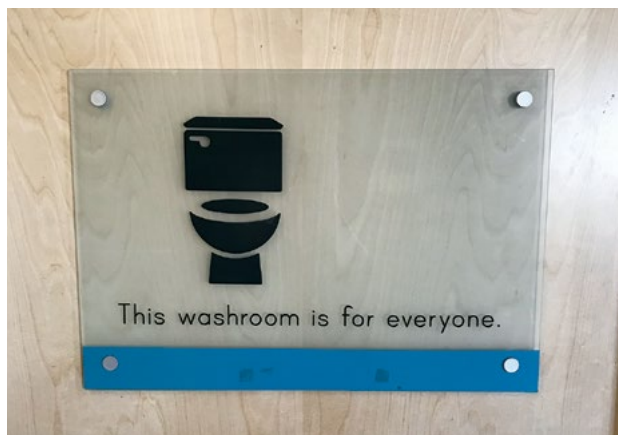


Elevator to the fourth floor



10C fourth floor space

The speakers will use microphones. A television monitor will display live captioning.



Washrooms



The fourth floor space has five all-gender washrooms and one all-gender barrier-free washroom.



Elder's Room — 10C's "Study"



Quiet Room — 10C's "Idea Hub"

Quiet Room



A Quiet Room (and Elder's Room) will be on the third floor. Access Ambassadors can direct and accompany you.

This is what Renann Isaacs Contemporary Art looks like.



Renann Isaacs Contemporary Art

5 Gordon Street
519-821-9068
ricagallery.com



Page 43



Accessible parking



There are two accessible parking spots beside Balzac's Coffee shop off Waterloo Ave., two storefronts away from Renann Isaac's Contemporary Art.

Entrance



The public entrance is accessible. It is level with the sidewalk and operable by power-automatic door opener.

Washrooms



Renann's is a single-space gallery with one all-gender barrier-free washroom.

This is what the eBar looks like.



eBar (above the Bookshelf)

37 Quebec Street
519-821-3311
bookshelf.ca/eBar



Accessible parking



After 6:00 pm there are three accessible spots in the adjacent lot. Level parking is on the street near the venue.

Bookshelf elevator



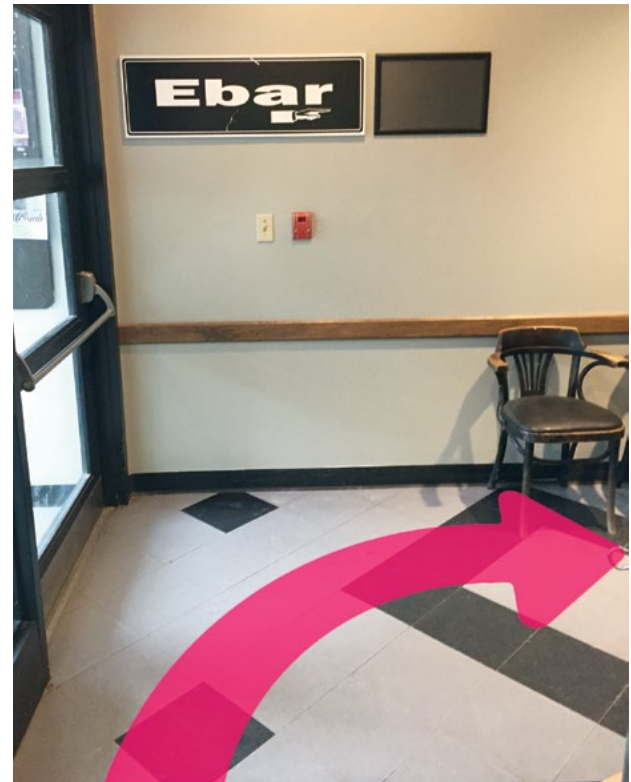
Press 2 to go up to the second level. The Bookshelf elevator takes you to the second floor, where fully accessible washrooms are located.



The button for the left inside door is on your right when you enter.



Elevator to eBar



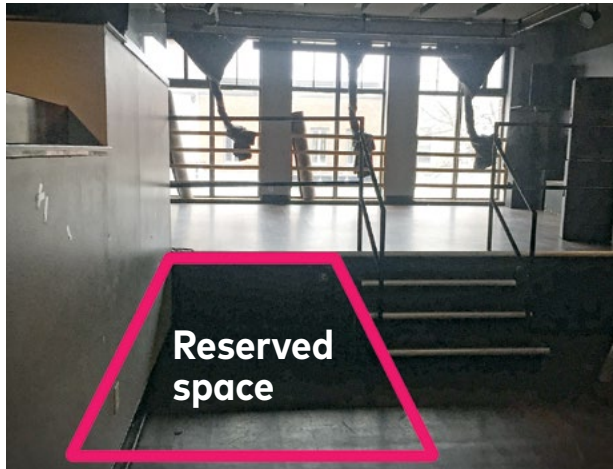
To reach the eBar from the elevator, turn right and proceed to the end of the hallway.



Turn right again to reach the back entrance to the eBar



Immediately to your right is a ramp to the back of the bar.



There is an area to the front of the stage next to the front stairs that is cordoned off and reserved for those who require unobstructed sightlines.

Washrooms



The all-gender barrier-free washrooms are to the right of the elevator on the second floor.

This is what Miijidaa looks like.



Miijidaa (next to The Bookshelf)

37 Quebec Street
miijidaa.ca

Entrance



Miijidaa, The Bookshelf, and the eBar are all in the same storefront location and are internally connected.

A manually operated, all-gender and barrier-free washroom is located at the back/side of the rear seating area.

This is what the Art Gallery of Guelph looks like.



Art Gallery of Guelph

358 Gordon Street
519-837-0010
artgalleryofguelph.ca



Accessible parking



Accessible parking is available to the left of the driveway next to the building.



Wheel Trans drop-off parking

Wheel Trans drop-off parking is also available at the entranceway to the ramp that wraps around the side of the building. There is a power-automated door at the entrance.

Coat racks

Coat racks are immediately to the right and left upon entering and will be staffed by ArtsEverywhere volunteers.

There will be a table by the reception desk with free program guides and ArtsEverywhere publications for sale.



Entrance, with reception at left

Elevator



Access Ambassadors will greet you and direct you to the elevator and to upstairs galleries.

The elevator is wide and high. It can fit multiple manual wheelchairs and/or power chairs.

Washrooms



Washrooms are located on the lower level. **The washroom may not fit a power chair but will fit a manual wheelchair.** Male and female washrooms are in the basement.

This is what Red Papaya looks like.



Red Papaya

55 Wyndham Street
North
519-265-7070
redpapaya.ca



This is the St. George's Square entrance to Old Quebec Street Mall. Red Papaya is just inside, on your right.

The Red Papaya is a restaurant inside Old Quebec Street mall.

Accessible parking

P Accessible parking is located in the East Parkade, the parking garage at the Sleeman Centre, attached to the Old Quebec Street Mall. Cars enter the East Parkade from Macdonell Street. Parking is free after 6:00 pm.



Entrance to Red Papaya



Inside Red Papaya

Entrance



Access Ambassadors will greet you at every turn from the Woolwich Street entrance to Red Papaya.

Accessible seating



Accessible seating is located in three areas:

1. On the raised level next to the accessible ramp
2. On the same level as the dance floor
3. In front of the stairs.

Washroom



A barrier-free, all-gender single-use washroom is accessible by ramp from the front door. It is at the back of the restaurant.

Live Captioning and ASL

Live captioning (projected as surtitles) and American Sign Language (ASL) interpretation will be provided for the following events:

**Thursday, January 23
6:30–8:30 pm**

10C, 42 Carden Street

- Welcome by Elder Peter Schuler
- Big Ideas in Art & Culture Speaker Khaled Barakeh

**Friday, January 24
7:00–10:00 pm**

**River Run Centre,
Main Stage,
35 Woolwich Street**

Literary reading by
Taqralik Partridge

Interview of Eric Fischl
by Robert Enright

Concert by Marianne
Trudel and Guelph
Symphony Orchestra,
The Gryphon Singers,
and Guelph Youth Jazz
Ensemble

What is a surtitle?

A surtitle is a caption projected onto a screen above a stage (such as in an opera), translating text being sung or spoken.

Saturday, January 25
9:30 am – 4:00 pm

**River Run Centre,
Canada Company Hall,
35 Woolwich Street**

"Gesturing Toward
Zero" conversations
curated by Elwood
Jimmy and Vanessa
Andreotti

Saturday, January 25
7:00–9:00 pm

**River Run Centre,
Co-operators Hall,
35 Woolwich Street**

An evening of music
with Patricia Cano
& Cots (Steph Yates)

Sunday, January 26
11:00 am – 1:00 pm

**River Run Centre,
Canada Company Hall,
35 Woolwich Street**

Presentations by
Taeyoon Choi
& Stephen Surlin

Sunday, January 26
2:00 pm – 4:00 pm

**River Run Centre,
Canada Company Hall,
35 Woolwich Street**

Presentation by
Jason DaSilva



**ASL
interpreters
will be wearing
badges that
say "ASL
Interpreter."
You can
ask them
questions.**

Relaxed Spaces and Quiet Rooms

The 2020 ArtsEverywhere Festival provides Relaxed Spaces and Quiet Rooms when the building or space accommodates them and for events where we expect large gatherings.

Relaxed Spaces



Relaxed Spaces are open areas that are equipped with live video and/or audio feeds. You can watch and listen to the programming (presentation or musical event) without being in a crowd or experiencing high volumes or other triggering sensory overload.

Before The Guelph Lecture—On Being starts, two Relaxed Spaces will be available on either end of the Bridge (the balcony overlooking Canada Company Hall, located on the second floor and accessible by elevator and stairs). During the presentations, the Relaxed Space will be in the Canada Company Hall. Both spaces have two wall-mounted monitors, which will broadcast audio-visual information.

Please ask our Access Ambassadors to adjust the brightness and volume for your comfort. Audiences will exit into both the Bridge and Canada Company Hall after the presentation in the Main Stage, so at that time both spaces will no longer function as Relaxed Spaces.

Quiet Rooms



Quiet Rooms are peaceful and are designated as no-talking zones. They will not have a live feed connection to the ongoing presentations.

River Run Centre

This Quiet Room is located in the backstage Green Room. As much as possible, it is scent-free and low stimulus. Access Ambassadors can help you to this Quiet Room and will stay with you to support your access needs, including escorting you to the backstage all-gender, single-user washroom if requested.

In the Quiet Room, you will find adjustable lights and blinds, couches, chairs, blankets, pillows, and a side table with water and sealed, nut-free energy bars. You will also find Access Supports such as noise buffering protectors, disposable odour-filtering masks and light-filtering glasses.

10C

This Quiet Room is located alongside an Elders' Room. Access Ambassadors can direct and escort you there upon request.

Silence

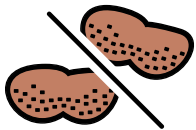
This Quiet Room has comfortable couches, non-adjustable lighting, and curtained windows. Access Ambassadors can direct and escort you there upon request.

How you can help include everyone

Thanks to the people who put together the Crippling the Arts Access Guide for generously giving us the rights to use their words and images.



Please help us to make this festival as scent-free as possible. This means using laundry detergent, softeners, shampoos/conditioners, soaps, and lotions that are all free from chemical or natural scents in advance of coming to the festival. If you need material support to do this, please contact Coman Poon at access@artseverywhere.ca

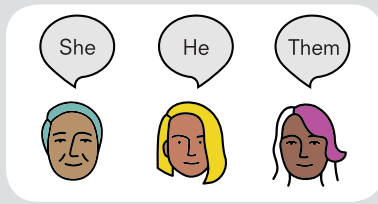


Please do not bring peanuts into the venues.

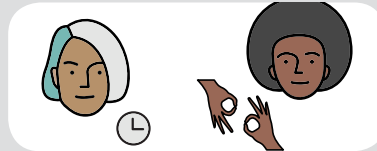


Always talk into the microphone. This will help the live caption stenographers transcribe what you are saying accurately.

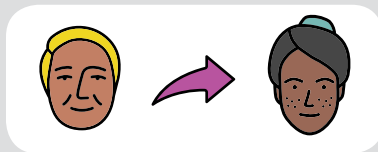
How you can help include everyone



Please respect people's pronouns.



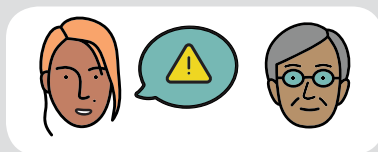
Wait for people to finish what they want to say before speaking.



Give the space to those who are not participating as much as you.



Please set electronic devices to vibrate.



We will endeavour to provide trigger warnings for all our programming and content. As a reciprocal act of consideration, please warn people if you are going to speak about difficult things. For example, let us know if your comment or story will be upsetting. Does it have any ideas or scenes about violence or hate that could make someone in the room feel triggered?

Glossary of words that will be used

Many of the definitions in this glossary are informed by the work of Elwood Jimmy and Vanessa Andreotti. For more details about the "Braiding" terms, we invite you to pick up a copy of the book *Towards Braiding* at the festival, or download it at ArtsEverywhere.ca.

Braiding

To imagine how people (especially Indigenous and non-Indigenous people) with different perspectives and understanding can start new relationships with each other. Braiding helps us find new kinds of conversations. It helps us respect our differences, misunderstandings, and histories of oppression. Braiding is something we are starting to work towards.

Colonization

Taking control over a land and its peoples, economies, education systems, spirituality, and culture. In Canada, this took place over the past 500 years with the genocide of the Indigenous peoples. It continues today in many different ways.

Contemporary art

Usually refers to art that was produced within the last few decades. It includes art that uses many different materials and methods, and addresses a wide range of themes.

Entanglement

A creative and constructive mixing together of different people, ideas, actions, or ways of understanding the world.

Ethical

Respectful of, generous towards, and seeking justice for people, the land, and its beings.

Generative

An attitude in work, art, or conversation that moves towards constructive or positive outcomes, even when there is disagreement or difficulty. For example, generative behaviours and attitudes are necessary to "get to zero" before the braiding of sensibilities (see other glossary terms) is possible.

Gesturing towards

Since we cannot know what the future will look like, we can only gesture towards imagined possible futures rather than prescribe or demand one specific kind of future. For example, gesturing towards a decolonized future is a complex, lifelong practice that does not guarantee any specific result. (Adapted from the definition at [decolonialfutures.net.](https://decolonialfutures.net/))

Getting to zero

All the work that needs to be done before we can braid our different understandings of the world together.

Labour

Another word for work. People often use the term "labour" within the arts and social justice worlds to mean the emotional, physical, intellectual, and interpersonal work that needs to be done by each of us in order to face, digest, and do something about colonization and racism. Labour also refers directly to everyday work, including domestic work, underpaid

Glossary of words that will be used

work, and regular day-to-day paid work.

Marginalization

Treating a person or group or other being as less important or insignificant.

Meaning

The definition, or our understanding, of a word, concept, idea, or action. Some cultures place a high value on meaning and prefer that what something means doesn't change. In other cultures, meaning is less important than a holistic understanding of what the world is like (through the senses, for example).

Modernity

A global, colonial condition in which *being* is reduced to *knowing*; profits are valued over people; the Earth is treated as a resource rather than a living relation; and all of the shiny promises of states, markets, and Western reason are propped up by poverty, genocide, and environmental destruction.

Non-human/more-than-human

All the beings in both the world of things we can see, know, and feel and the world of things we can't see, know, or feel. Non-human/more-than-human often means, for example, stones, trees, plants, animals, and other creatures, as well as ancestors and the spiritual realm, and the way that all these things might overlap.

Practice

Applying an idea or method to actions in a sustained way so that it can be improved, learned from, or applied differently. For example, we might say, "she has an art practice" or "they are practicing generosity."

Relational practices

Practices based on their connections to the world; or practices with an awareness of how they exist in relationship with others, as opposed to "transactional practices." Lisa Hirmer's conversation on Saturday will be discussing relational practices.

Residency

When an artist is offered the resources (time, money, space) to do their creative work. Sometimes a residency program invites the artist to live in a house or studio in a place that is not their regular home (such as the Eastern Comma Writer-in-Residence at North House near Cambridge, Ontario). A residency might be within their home community, where they live in their own house (such as the Thread Residencies, which will be shared during the Festival's Saturday program).

Sansei

A Japanese word referring to the third generation. In her biography, Haruko Okano identifies as a sansei Japanese-Canadian.

Sensibilities

How we appreciate and respond to complex emotional input.

- **"Brick" sensibilities**

Ways of being that emphasize individuality, fixed form, and linear time. Knowledge is compared to building a wall, brick by brick.

- **"Thread" sensibilities**

Ways of being that emphasize interwovenness, shape-shifting flexibility and layered time. Knowledge is compared to threads that aren't fixed in time and place, but gesture toward the unknowable wholeness of the world.

Ways of being

The ways that people understand what it is to be in this world, including the ways we understand (or do not understand) life and death, the spirit, imagination, possibility, and ethics. In academic language, ways of being are called "ontologies."

Glossary of words that will be used

Ways of knowing

The ways that people understand (or do not understand) what it means to know something, what meaning is, and what (un)certainty is. In some ways of knowing, the value of not knowing is as important as knowing. Ways of knowing might include how we know (or do not know) the world through education, language, perception, the senses, and the body. In academic language, ways of knowing are called "epistemologies."

Ways of relating

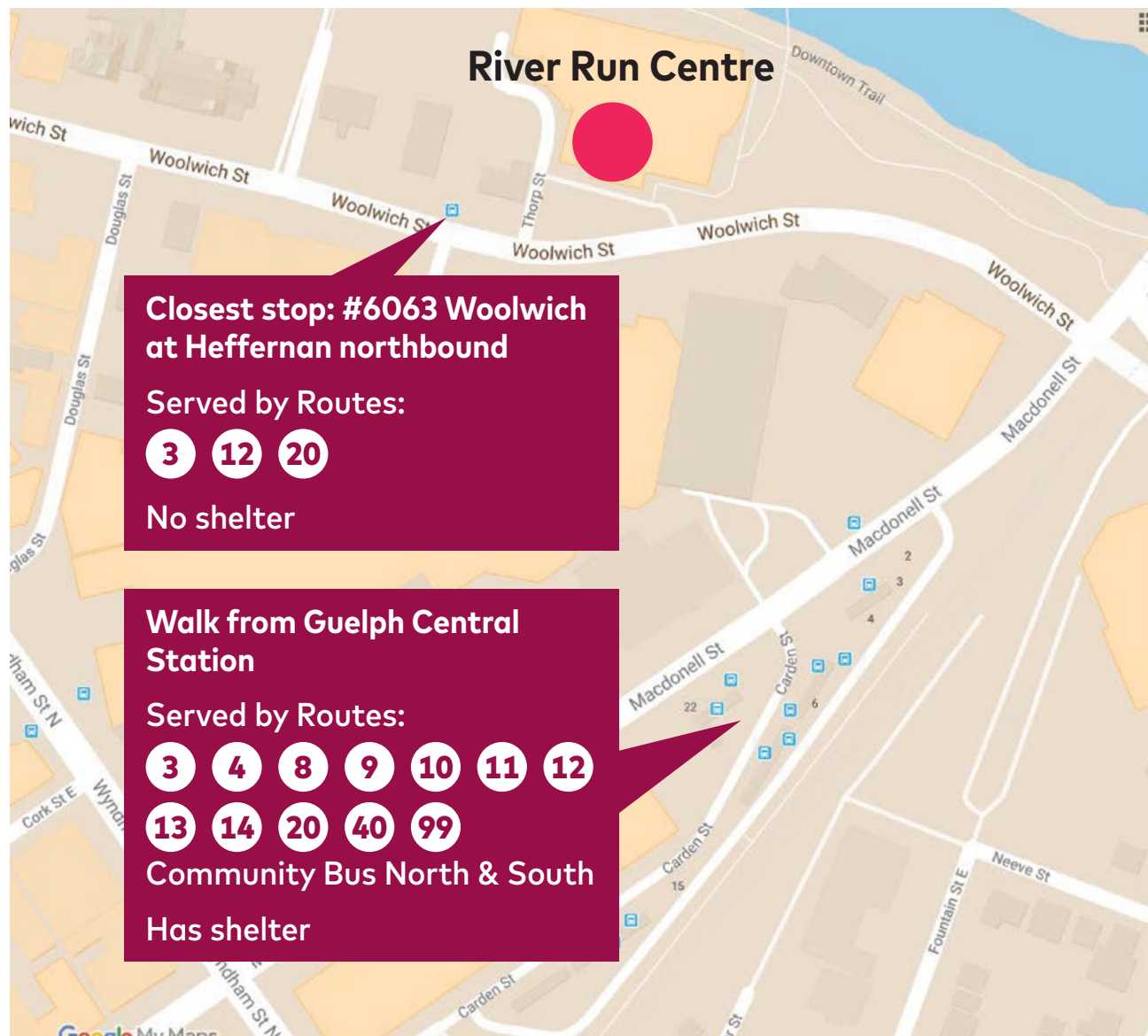
The ways that people relate to each other and the world around them, including the land and all the creatures who live with us on the land. Ways of relating might also include how we relate through politics, languages, civil society, communication, and the arts. Ways of being and knowing influence how we relate.

Bus stops and schedules

Bus route numbers and frequency

- ➊ Every 30 minutes all day, every day
 - ➋ Every 20 minutes until 6:00 pm
Monday to Friday, every 30 minutes all other times
 - ➌ Every 30 minutes all day, every day
 - ➍ Every 30 minutes all day, every day
 - ➎ Every 30 minutes all day, every day
 - ➏ Every 20 minutes during morning and evening rush hour Monday to Friday, every 30 minutes all other times
 - ➐ Every 30 minutes all day, every day
 - ➑ Every 20 minutes during rush hour Monday to Friday, every 30 minutes all other times
 - ➒ Every 20 minutes during rush hours Monday to Friday, every 30 minutes all other times
 - ➓ Every 30 minutes all day, every day
 - ➔ Every 30 minutes all day, every day
 - ➕ Every 30 minutes all day, every day
 - ➖ Every 30 minutes all day, every day
 - ➗ Every 30 minutes Monday to Friday from 3:00 to 6:00 pm
 - ➘ Every 10 minutes all day Monday to Friday, every 15 minutes on weekends south of Guelph Central Station, every 30 minutes on weekends north of Guelph Central Station
- All schedules are available at bit.do/guelph-bus

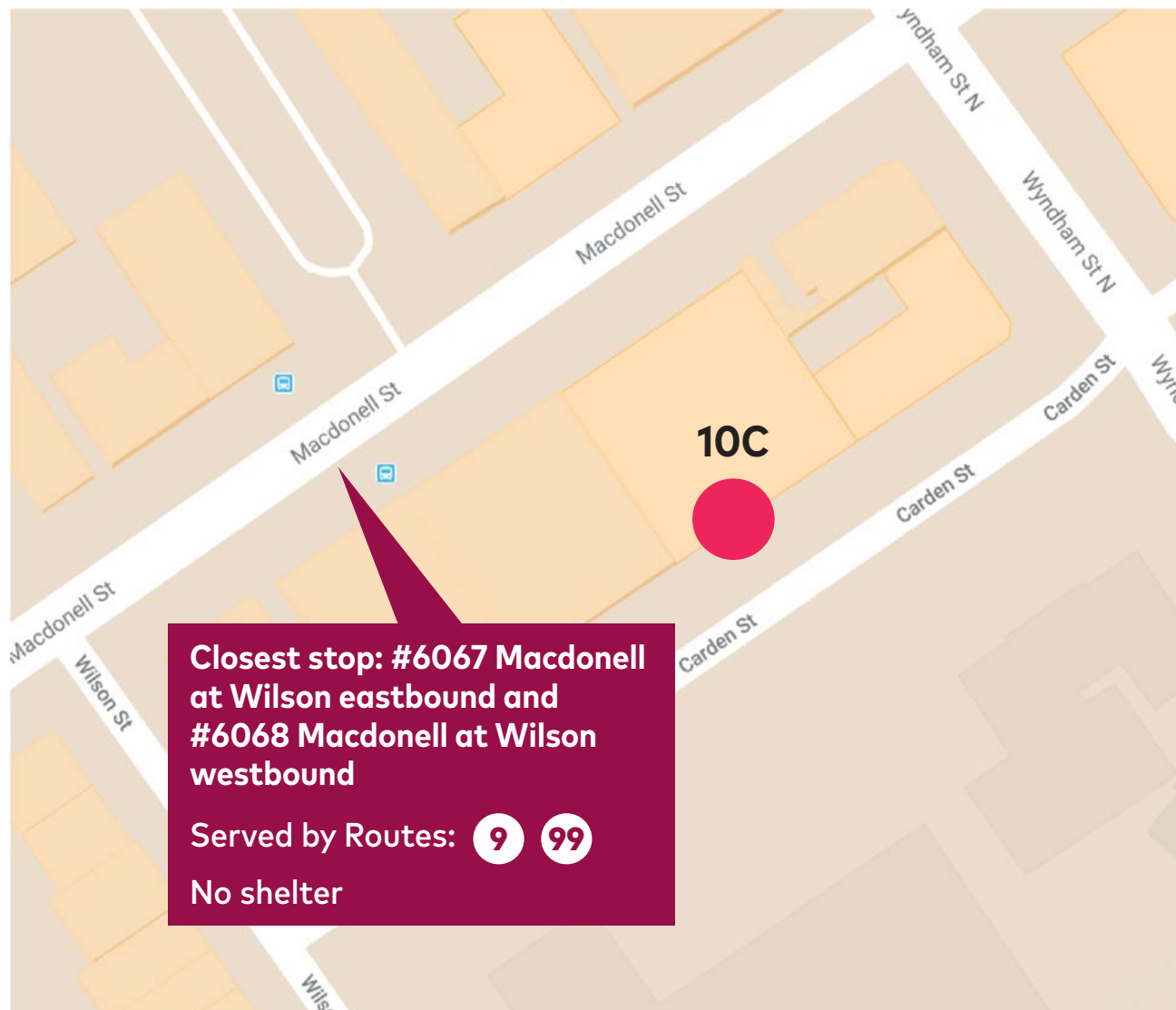
River Run Centre



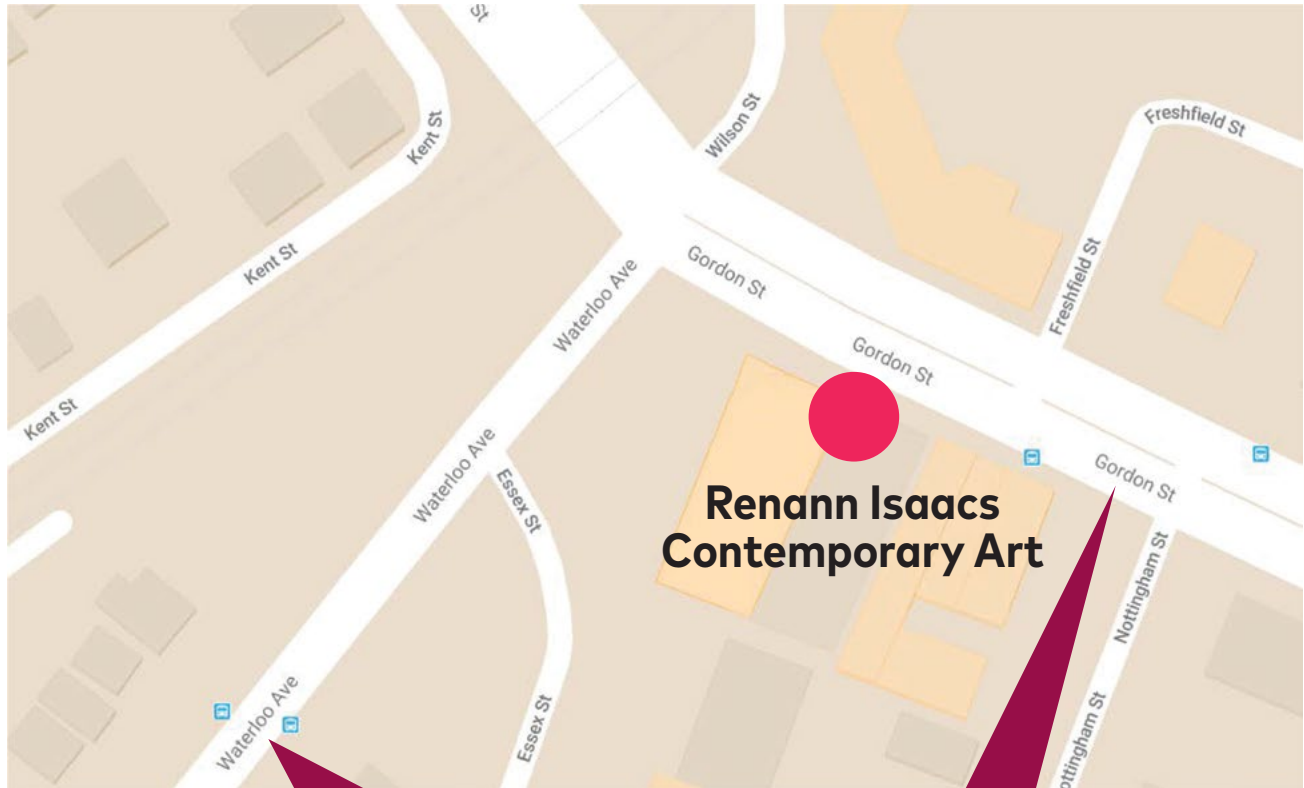
Silence



10C



Renann Isaacs Contemporary Art



**Closest stop: #922 Waterloo
at Dublin eastbound and #901
Waterloo at Dublin westbound**

Served by Route: 9

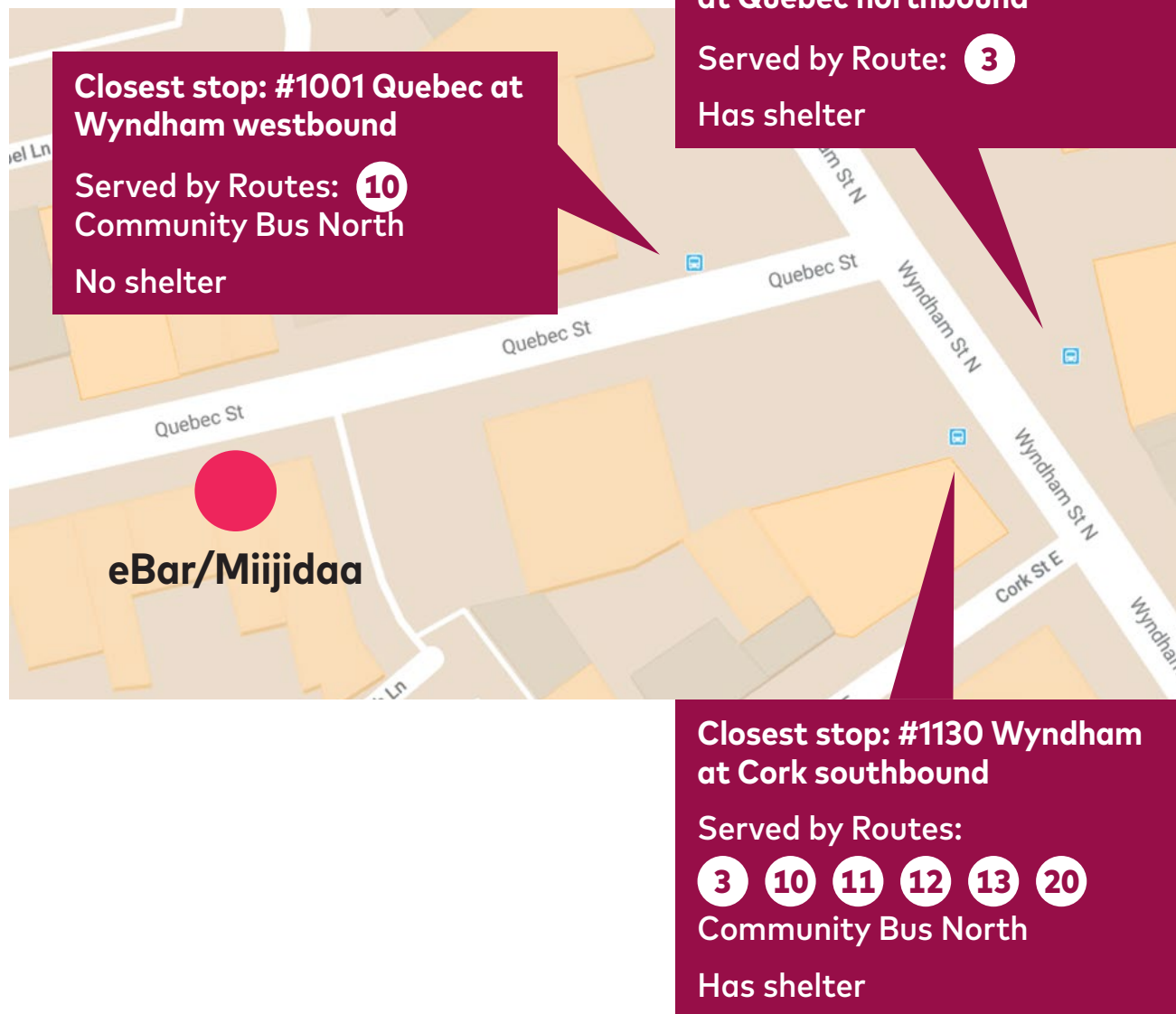
No shelter

**Closest stop: #501 Gordon
at Nottingham southbound
and #544 Gordon at
Nottingham northbound**

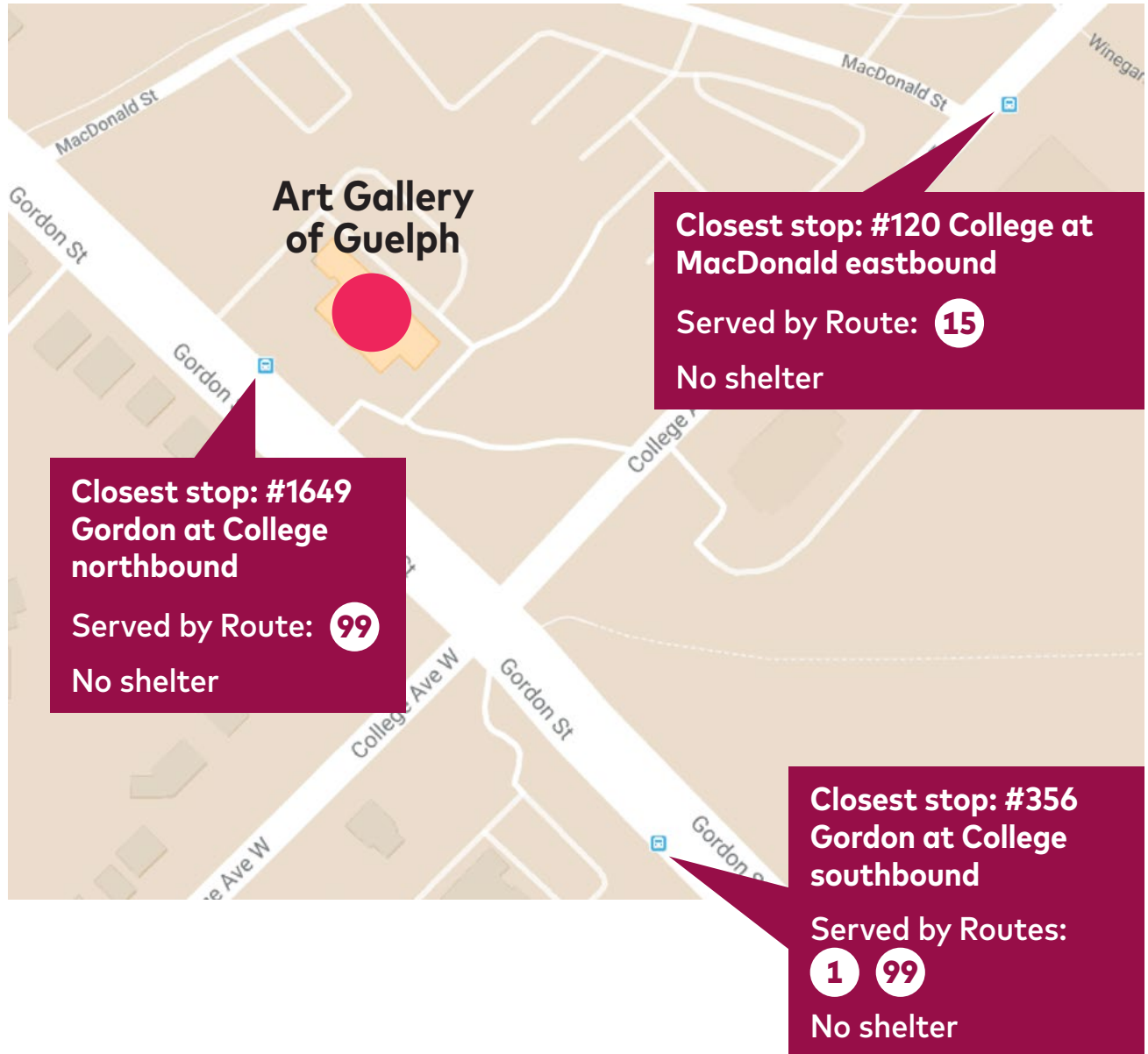
Served by Route: 99

No shelter

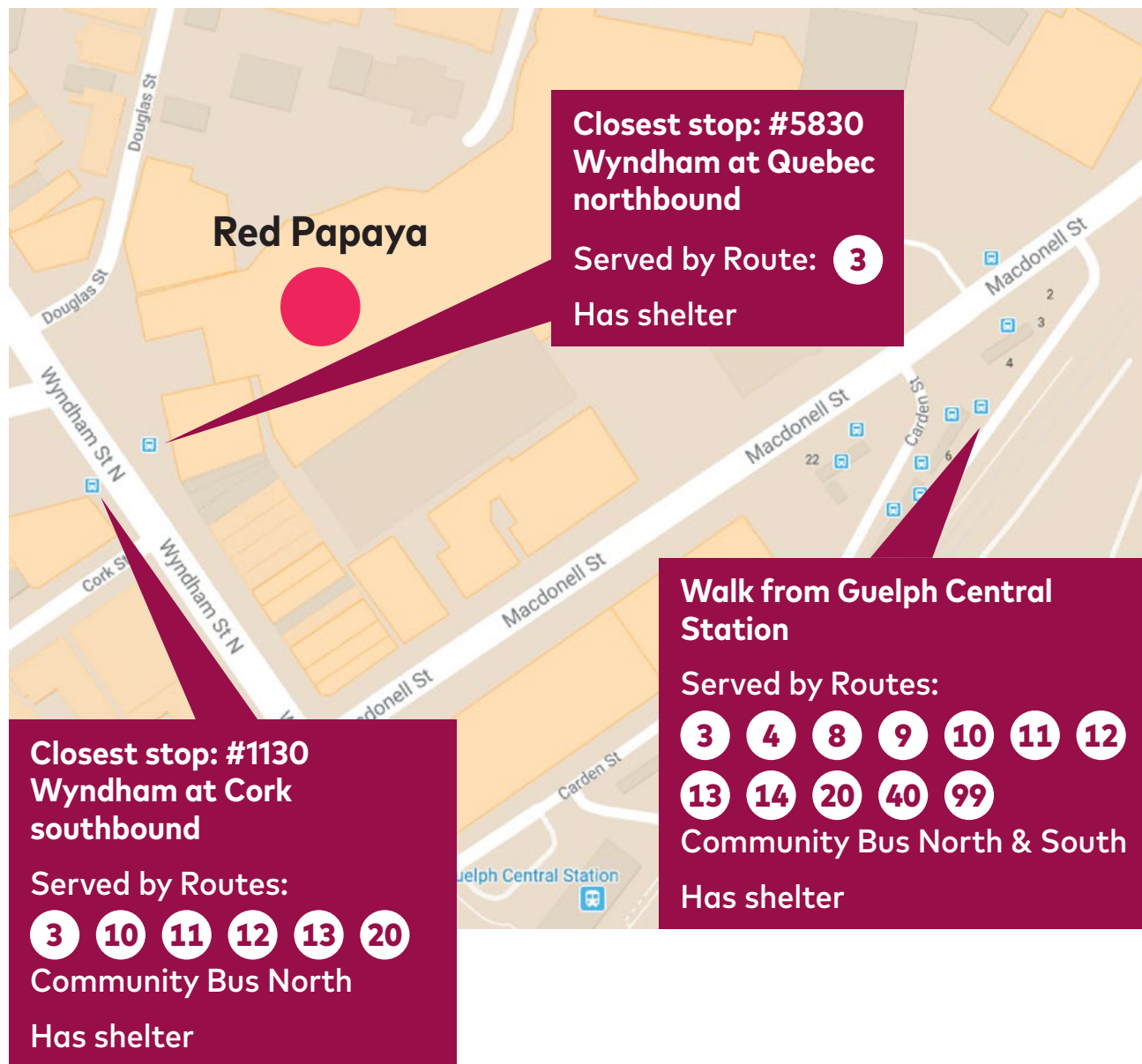
eBar/Miijidaa



Art Gallery of Guelph



Red Papaya



Thanks

We are grateful for the contributions of individuals, organizations, and our event venues toward our first access guide: Bodies in Translation, City of Guelph Public Services, and Kristina McMullin of Tangled Arts.

Special thanks to all our Access Ambassadors.

Culture of Care lead and Access Ambassador co-lead: Coman Poon

Embodied audit and Access Ambassador co-lead: Crista Renner

Embodied audit and Guelph Lecture—On Being Access Ambassador co-lead: Mike Greer

Accessibility consultants:
Aislinn Thomas
Dawn Matheson

Copy editor: Anna Bowen

Graphic design: Lind Design

Glossary and content:
Shawn Van Sluys

Website: Curtis Walker

Project lead: Marva Wisdom

Venue photos: Anna Bowen,
Julia Grady, Gareth Lind, Coman Poon,
Crista Renner, Curtis Walker

Venues

Art Gallery of Guelph, 10C, Miijidaa, The Bookshelf and eBar, River Run Centre, Red Papaya, Silence Sounds, and Renann Isaacs Contemporary Art.

